

COMPRESSOR

M55SA-

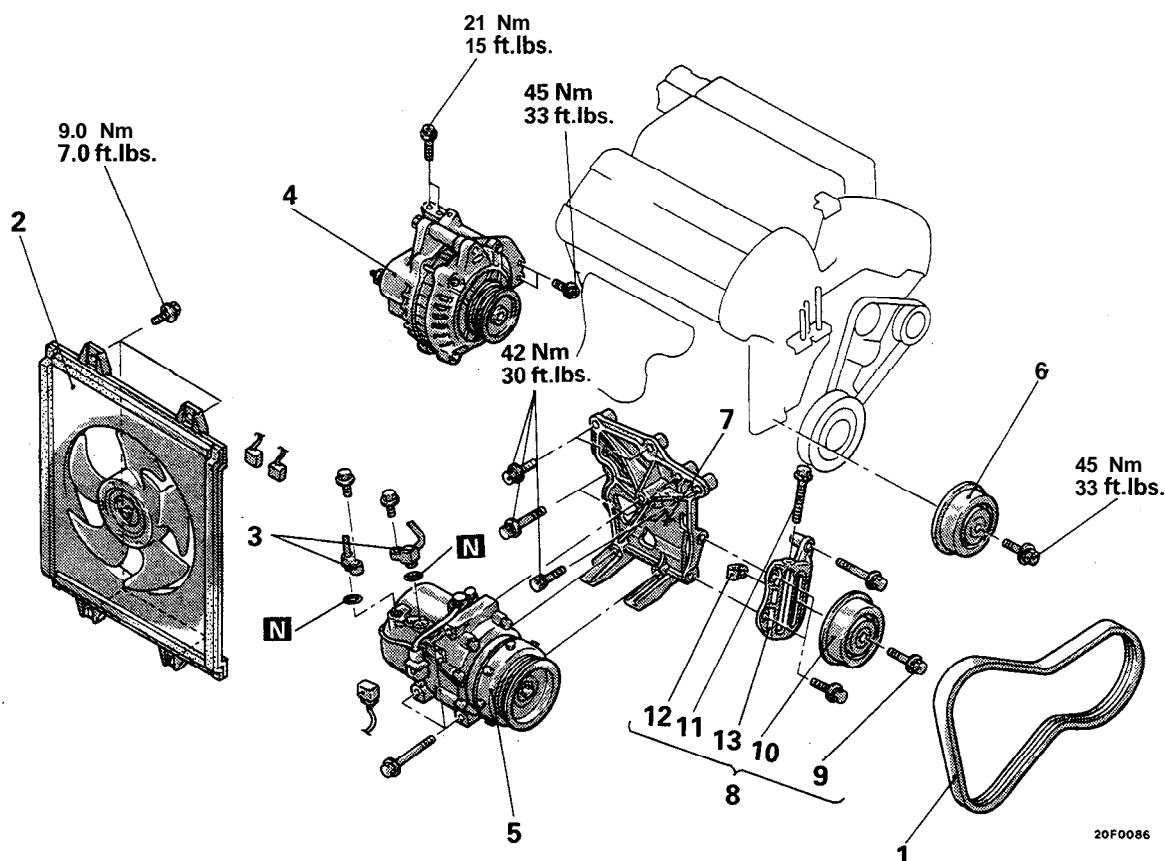
REMOVAL AND INSTALLATION

Pre-removal Operation

- Discharge of the Refrigerant (Refer to P.55-14.)

Post-installation Operation

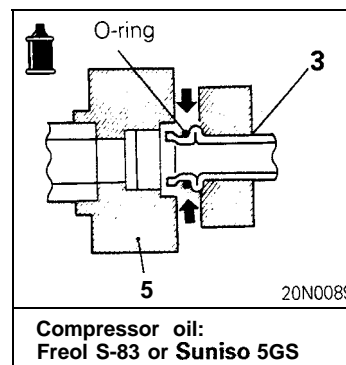
- Adjustment of the Compressor Drive Belt (Refer to GROUP 11 – Service Adjustment Procedures.)
- Charging of Refrigerant (Refer to P.55-11.)



20F0086

Removal steps

- ◆◆ 1. Compressor drive belt
- ◆◆ 2. Condenser fan motor assembly
- ◆◆ 3. Connection of suction hose and discharge hose
- ◆◆ • + 4. Alternator (Refer to GROUP 16 – Alternator.)
- ◆◆ • * 5. Compressor
- ◆◆ 6. Idler pulley
- ◆◆ 7. Compressor bracket
- ◆◆ 8. Tension pulley assembly
- ◆◆ 9. Bolt
- ◆◆ 10. Tension pulley
- ◆◆ 11. Bolt
- ◆◆ 12. Adjustment plate
- ◆◆ 13. Tension pulley bracket



20N0089

Compressor oil:
Freol S-83 or Suniso 5GS