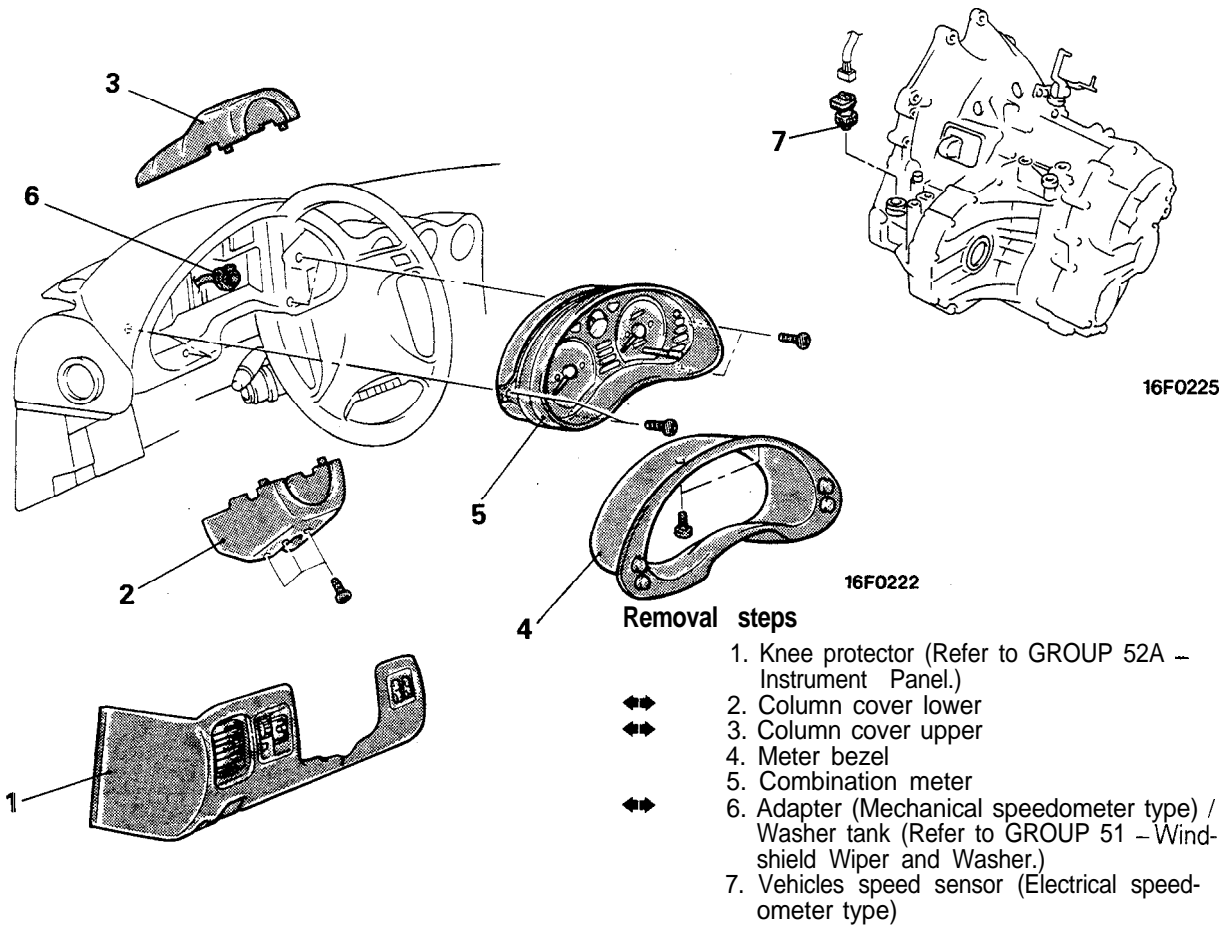


COMBINATION METERS

REMOVAL AND INSTALLATION

M54HJAS



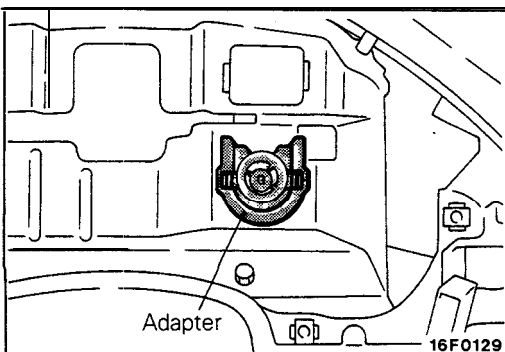
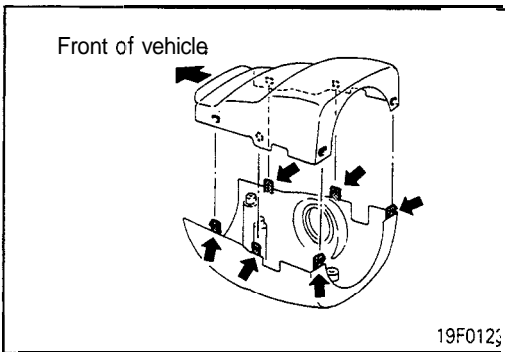
SERVICE POINTS OF REMOVAL

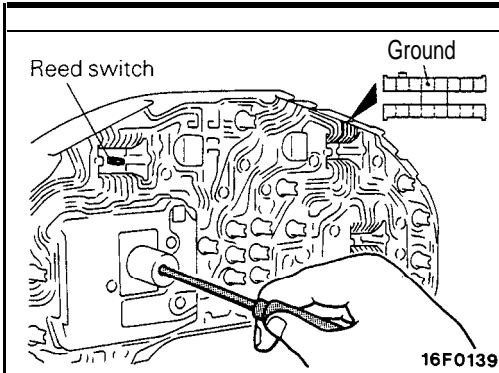
2. REMOVAL OF COLUMN COVER LOWER / 3. COLUMN COVER UPPER

After the screws have been removed, remove the covers, while making sure not to break the grippers.

6. REMOVAL OF ADAPTER <Mechanical Speedometer Type>

- (1) Disconnect the speedometer cable at the transaxle end of the cable.
- (2) Pull the speedometer cable slightly toward the vehicle interior, release the lock by turning the adaptor to the left or right, and then remove the adapter.



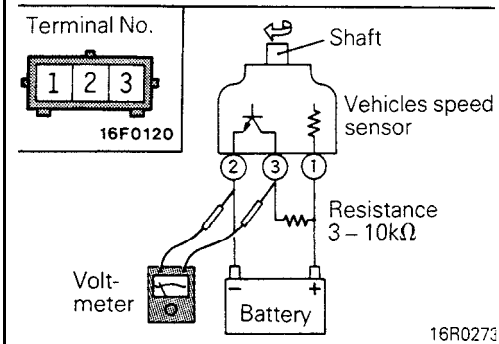


INSPECTION

REED SWITCH INSPECTION

<Mechanical Speedometer Type>

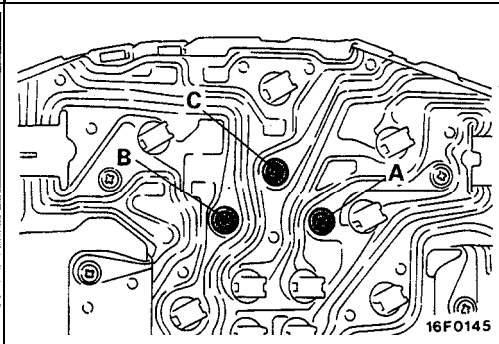
Use circuit tester to check circuit repeats off/on between terminals when speedometer shaft turned several times.



VEHICLES SPEED SENSOR INSPECTION

<Electrical Speedometer Type>

- (1) Remove the vehicles speed sensor and connect as shown in the illustration, using a 3 – 10 kΩ resistance.
- (2) Use a voltmeter to check for voltage at terminals ② and ③ when the pulse generator shaft is turning. (One revolution is four pulses.)



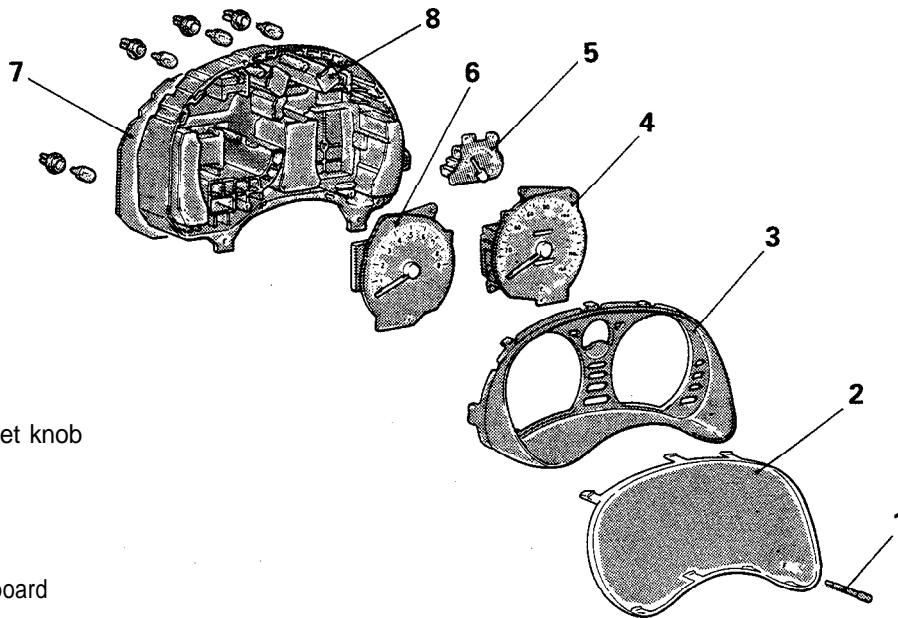
FUEL GAUGE INSPECTION

Measure resistance between terminals with circuit tester.

Standard value:

- A - B **Approx. 254 Ω**
- A - C **Approx. 101 Ω**
- B - C **Approx. 153 Ω**

DISASSEMBLY AND REASSEMBLY



Disassembly steps

1. Trip counter reset knob
2. Meter glass
3. Window plate
4. Speedometer
5. Fuel gauge
6. Tachometer
7. Printed-circuit board
8. Meter case

16F0207