

PROCEDURE FOR INPUT OF SECURITY CODE FOR RADIO AND TAPE PLAYER WITH ANTI-THEFT SYSTEM

The radio and tape player does not operate in the following states.

- (1) Power supply to the radio and tape player has been suspended for more than one hour continuously by removing the cable from the battery terminal or disconnecting the harness connectors.
- (2) The power supply to the radio and tape player has been suspended for more than one hour owing to blown fuse or discharged battery.
- (3) The radio and tape player has been replaced.

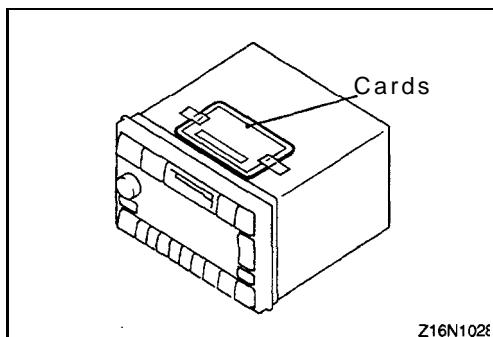
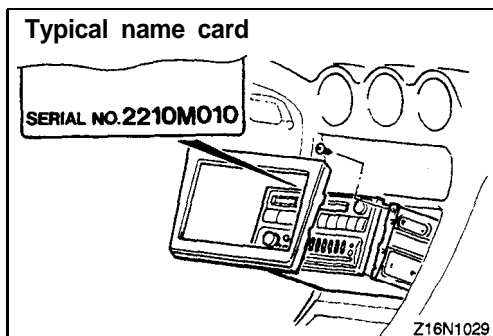
If the radio and tape player does not operate for these causes, input the security code by the following procedure to operate it.

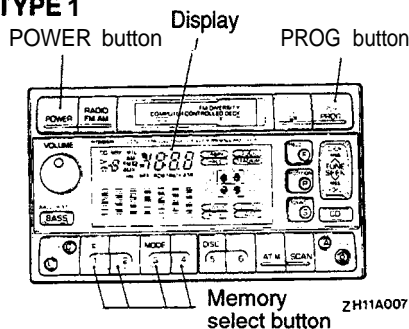
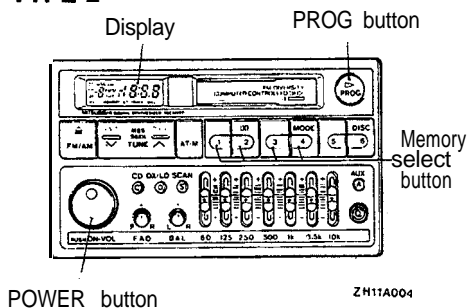
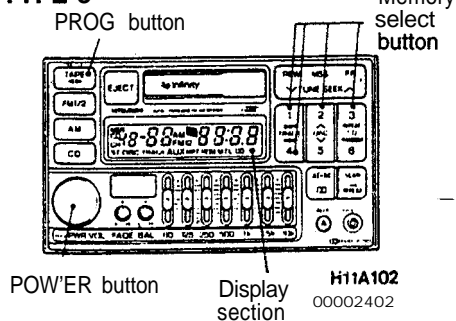
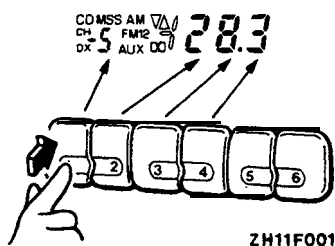
1. Using any of the following methods, confirm the security code.
 - (1) Read the security code indicated on the cards retained by the user.
 - (2) If the security code is unknown owing to the user's loss of the cards,
 - a. Remove the audio panel and then pull out the radio and tape player partially.
 - b. Read the serial No. shown on the name card of the radio and tape player.
 - c. Look up the anti-theft code corresponding to the serial number in the serial number-anti-theft code table; or, make inquiries to Mitsubishi Motor Sales of America, Inc.

- (3) When the radio and tape player is replaced
Read the security code on the cards attached to the upper surface of the replacement radio and tape player.

NOTE

Deliver the cards (two) to the user.



TYPE 1**TYPE 2****TYPE 3****Typical security code "5283"**

2. Return power supply for the radio and player to the normal state.
3. Turn the ignition key to the "ACC" position.
4. Press the POWER button, and "code" will be displayed on the display.

5. Press No.1 through No.4 memory select buttons and set the 4-digit security code indicated on the card.

Every time each digit key is pressed, the number changes as follows:

→ 0 → 1 → 2 ... 9 → 0 ...

6. Press the PROG button. After a beep is heard, the radio and tape player will be in the operating state.
7. If the input security code does not agree with that in memory, "1 Err" is displayed on the display. In a few seconds, it will change to "code". So, repeat steps 4 and 5.

NOTE

- (1) The security code can be set three times at the most.
- (2) The second error is displayed as "2 Err". If the third error is made, "3 Err" is displayed and then it changes to "OFF".
- (3) When setting is attempted four or more times, keeping the ignition key in the "ACC" or "ON" position for about one hour will automatically erase the "OFF" display.

After the erasing, therefore, repeat step 3 and up.
If the ignition key is turned to the "OFF" position during one-hour period of keeping it in "ACC" or "ON" position, the "OFF" display will be erased.

With the ignition key placed in the "ACC" position again, press the POWER button, and the "OFF" display will be resumed. Therefore, keep this state for another one hour or so.